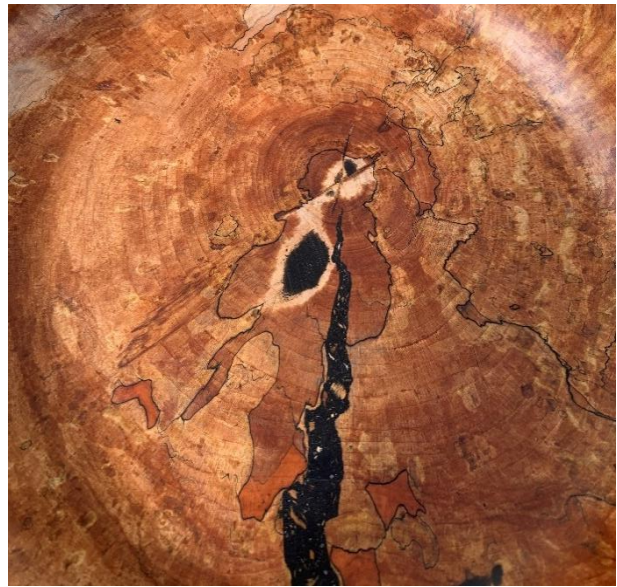


BLACKWOOD Black BLACKWOOD Neutral

Wood Repair Pastes

Black or neutral colour for tinting with colour pigments or Koloro Epo colorants



Blackwood is a fast-curing paste used for filling cracks, cavities, and other irregularities in wood.

The maximum layer thickness is 10-15 mm.

For thicker applications, simply apply in multiple layers.

Mixing ratio by weight: Component A : Component B = 100 : 100

Mixing ratio by volume: Component A : Component B = 100 : 75

Processing time/Pot life at 20°C (100g): 10 min.

Full curing time at 23°C: 30 minutes – 2 hours (depending on layer thickness)

Packaging:

2 x 250 g (Component A and B)

2 x 500 g (Component A and B)

The information and recommendations contained herein are based on our research and are believed to be accurate, but no warranty, express or implied, is made or should be inferred. Purchasers should test the products to determine acceptable quality and suitability for their own intended use. Nothing contained herein shall be construed to imply the nonexistence of any relevant patents or to constitute a permission, inducement or recommendation to practice any invention covered by any patent, without authority from the owner of the patent.



SAMSON KAMNIK d.o.o. Kovinarska cesta 28, SI-1240 KAMNIK, SLOVENIJA

Tel: 00386 1 83 17 255, 01 83 19 260 Fax: 00386 1 83 17 179 samson@samson-kamnik.si www.samson-kamnik.si
www.revivo.si www.naravno.info www.kompoziti.si www.naredi.eu